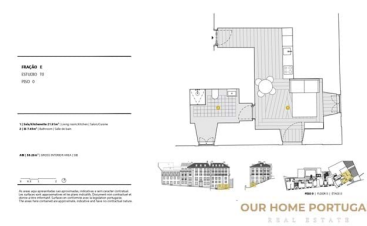
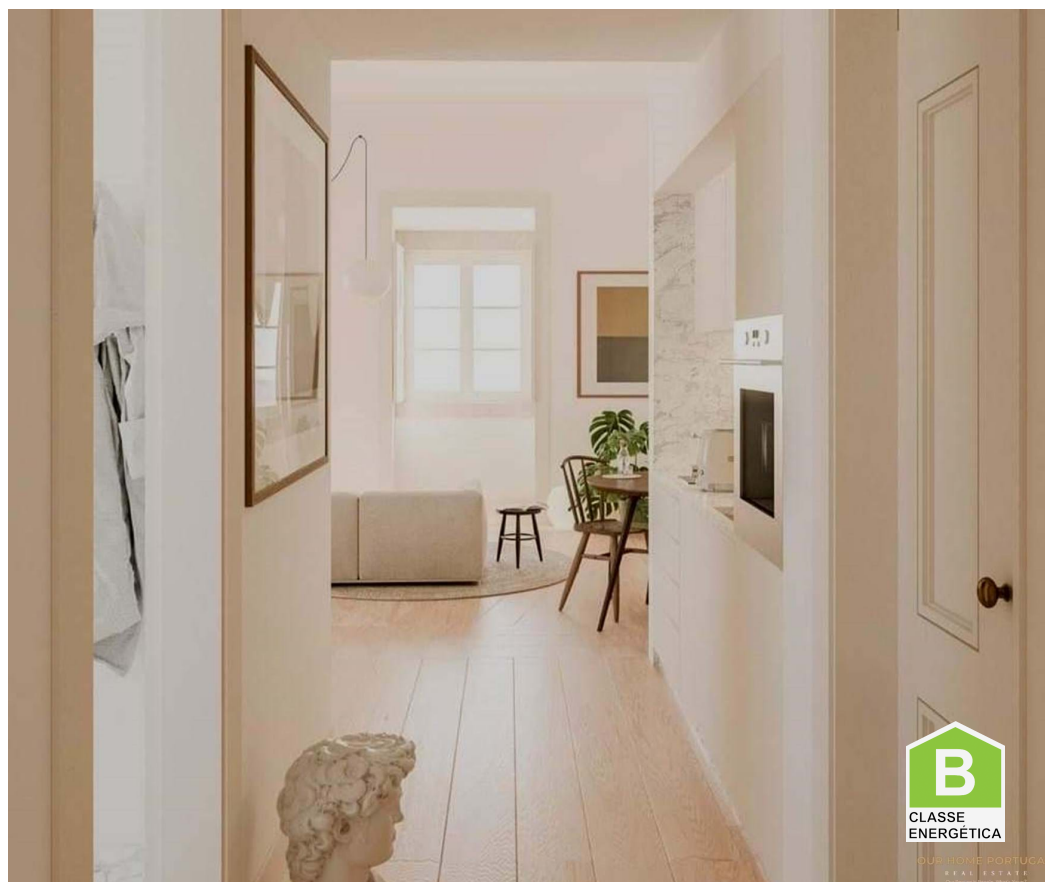




Santa Maria Maior - Apartment



1

Bathrooms



62

Area (m²)



OUR HOME PORTUGAL
REAL ESTATE

459 000 €

(EUR €)

Apartment T0

T0 apartment and modern bathroom, perfect for providing a comfortable and elegant space. A large area of 62 m2 offers a perfect balance between privacy and convenience.

Fully mobile and equipped with modern appliances including laundry equipment and furniture.

Equipped with elegant kitchenette, built-in wardrobes, video intercom, elevator and built-in wardrobes with double glazing and electrical sockets. With its panoramic view of the city and urbanization, it offers easy access to all amenities, such as shops, restaurants, hospitals, farms, public transport, schools, public swimming pools and external public spaces. Now you have the opportunity to live in a comfortable and modern space.

It is connected to one of the most emblematic places in Lisbon, in Praça do Rossio, which is part of

T +351 930 406 103 ² · E info@ourhomeportugal.com

Avenida Luisa Todi n 277 - 2900-450 Setúbal

AMI 22847-AMI

¹ (Call to national fixed network) | ² (Call to national mobile network)



the tourist complex, a building made up of 36 apartments, of types T0, T1, T1 Duplex and T2 Duplex.

It is the corner of Lisbon that enchants people from all over the world, it represents its perfection or intersection between heritage and modernity, and its originality in a picturesque space that follows the hustle and bustle of the city. Although it is a rehabilitated building, it maintains its typical Liberland structure, perpetuating the original treasures, overlooking the river, it is the ideal address for those who want to live or invest in one of the most dynamic cities with constant tourist growth.

The complex is close to important monuments in the metropolis, such as the statue of D. Pedro IV, the D. Maria II Theater and the Coliseu dos Recreios. Located in Praça do Rossio, it enjoys a privileged location on transport routes, with easy access to the metro, buses and Rossio train station.

This is the perfect opportunity to experience the wave you want, but at the same time experience a luxurious wave trip at home.

Tourist apartments with guaranteed profitability of 4% per year and completely secure management. It is the ideal solution for your investment, but our destinations are understood by Europe and the world.

The amounts related to natural taxes, such as notary and registration taxes, will be the responsibility of the buyer; The broker's commission must be used by the seller, in accordance with Portuguese law. Availability of items will be agreed. All material is based on information we believe to be reliable.

A: Yes Q: What is the difference between a residential building and a tourist building?

A: The difference between our traditional residential complexes and our vacation apartment complexes is the same as which services become our final services based on their individual classification. Our holiday apartment complex offers a way to generate returns by exploring an ideal tourist destination. Our holiday apartments are basically a product that generates profitability, we promote the complete management of the holiday apartments designed by our owners, they are responsible for the management of all their holiday apartments in the complex.

Our holiday apartment owners are not permitted to use their own apartments for tourist purposes and may therefore use them as a permanent residence.

Q: Can you move out of this apartment and into permanent residence?

A: Quite simply, we can inform you of our intention and enter into a contract for that purpose. A logistical vision is necessary to ensure that the apartment is definitely mobile and is equipped with the requirements and standards applicable to the "tourist establishment" classification.

T +351 930 406 103 ² · E info@ourhomeportugal.com
Avenida Luisa Todi n 277 - 2900-450 Setúbal
AMI 22847-AMI

¹ (Call to national fixed network) | ² (Call to national mobile network)



Property Features

- Washing machine
- Air conditioning
- Equipped kitchen
- Private condominium
- Kitchenette
- Video entry system
- Double glazing
- Main drainage
- Parking space
- Mains water
- Dishwashing machine
- Fitted wardrobes
- Proximity: Airport, Mountain, Beach, Golf course, Shopping, Restaurants, City, Open field, Hospital, Pharmacy, Public Transport, Schools, Public Swimming Pools, Playground
- Drive way
- Views: City view
- Lift
- Electric shutters
- Central location
- Energetic certification: B
- Rental licence

T +351 930 406 103 ² · E info@ourhomeportugal.com
Avenida Luisa Todi n 277 - 2900-450 Setúbal
AMI 22847-AMI

¹ (Call to national fixed network) | ² (Call to national mobile network)