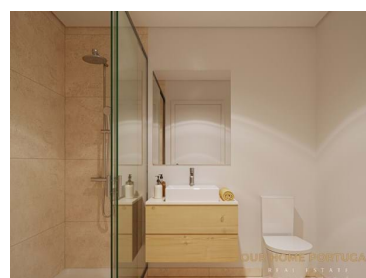
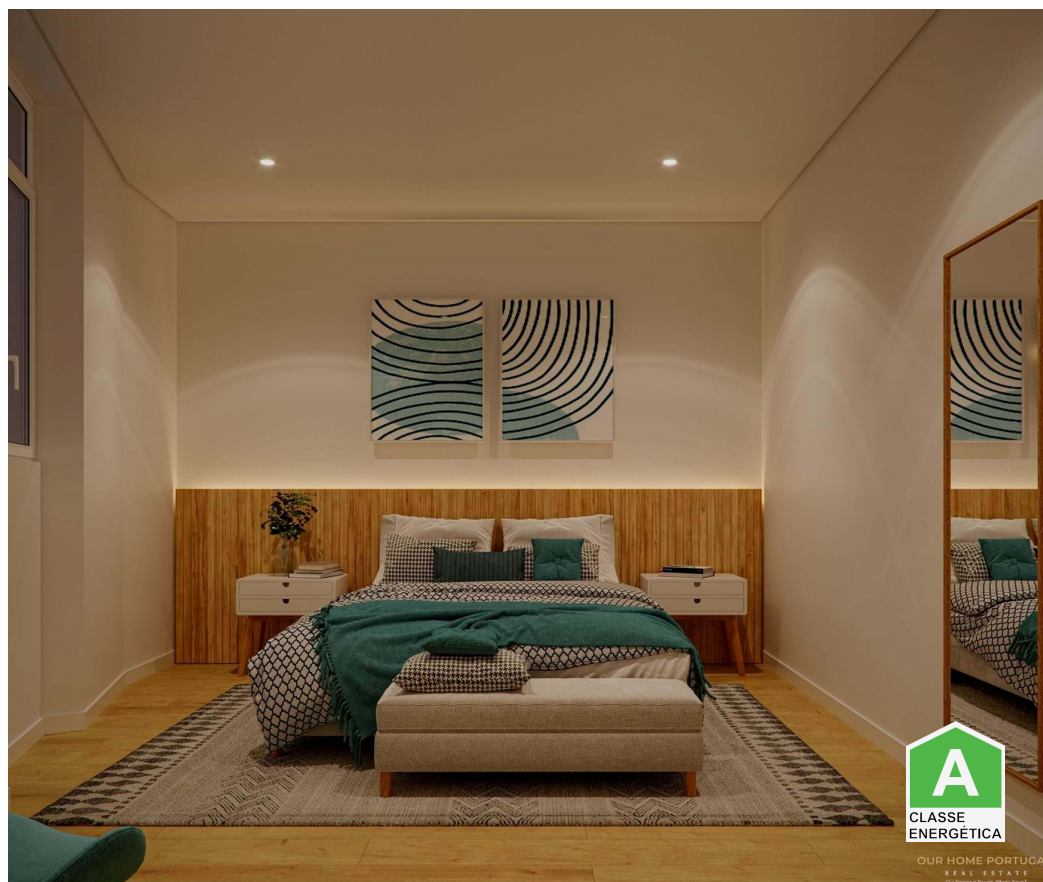




Reference
Scan the QR code to view the property

São Vicente - Apartment



 1	 1	 63		N/A
Bedrooms	Bathrooms	Area (m ²)	Garage	(EUR €)

1 Bedroom Apartment

In the stunning parish of São Vicente, located in the historic center of Lisbon, surrounded by numerous historic neighborhoods.

This neighborhood is almost entirely a hill with high points with stunning views. In the midst of the hustle and bustle it is still possible to enjoy a quiet lifestyle with the traditional cafes, shops and small boutiques that have remained intact for more than a century. The demand for real estate in this family-friendly yet modern neighbourhood has been growing in recent years and the multicultural vibe can be felt on the streets.

The project offers 21 apartments with a range of options, including studios, one-, two- and three-bedroom units and private units. Parking spaces.



Vitor Falcão

Founder and Real Estate Consultant

(+351) 930 406 103 ²

vitor.falcao@ourhomeportugal.com

T +351 930 406 103 ² · E info@ourhomeportugal.com

Avenida Luisa Todi n 277 - 2900-450 Setúbal
AMI 22847-AMI

¹ (Call to national fixed network) | ² (Call to national mobile network)



The building is designed with a contemporary architectural style, blending seamlessly into the surrounding cityscape. It features an elegant and attractive façade, incorporating large windows to maximize natural light and offer residents captivating views of the city.

The development consists of six floors, each offering a range of apartments designed to cater to different lifestyles and preferences. The floors are connected by elevators and well-designed stairs, ensuring convenient access for residents.

In its surroundings a few minutes walk, the proximity of emblematic areas, such as the 'Largo da Graça', 'Feira da Ladra', 'Panteão Nacional' or the 'Campo de Santa Clara' and transport. About 800 m from the airport is Santa Apolónia station.

Proximity to schools, services, hospitals, museums, gardens, tourist attractions and points of interest.

You can enjoy the magnificent view of the city by opting for the Miradouro da Graça or the Miradouro da Senhora do Monte.

Apartment consisting of bedroom, open-space living room with fully equipped kitchen and bathroom, with good areas and very bright. This apartment has excellent finishes and great construction materials, a feature that is evident throughout the building, also highlighting its excellent location. Underground parking for residents' vehicles.

Amounts related to fees due of any kind, as well as notarial and registration fees will be the responsibility of the buyer; The mediator's commission must be paid by the seller, as stipulated by Portuguese law. The availability of the property will be agreed. All material is based on information that we consider reliable



Vitor Falcão

Founder and Real Estate Consultant

(+351) 930 406 103 ²

vitor.falcao@ourhomeportugal.com

T +351 930 406 103 ² · E info@ourhomeportugal.com

Avenida Luisa Todi n 277 - 2900-450 Setúbal

AMI 22847-AMI

¹ (Call to national fixed network) | ² (Call to national mobile network)



Reference
Scan the QR code to view the property

Property Features

- Washing machine
- Air conditioning
- Equipped kitchen
- Garage
- Kitchenette
- Views: City view
- Lift
- Electric garage gate
- Parking space
- Energetic certification: A
- Dishwashing machine
- Fitted wardrobes
- Proximity: Airport, Mountain, Beach, Golf course, Shopping, Restaurants, City, Open field, Hospital, Pharmacy, Public Transport, Schools, Public Swimming Pools, Playground
- Drive way
- Storage / utility room
- Video entry system
- Electric shutters
- Main drainage
- Security door
- Mains water



Vitor Falcão

Founder and Real Estate Consultant

(+351) 930 406 103 ²

vitor.falcao@ourhomeportugal.com

T +351 930 406 103 ² · E info@ourhomeportugal.com

**Avenida Luisa Todi n 277 - 2900-450 Setúbal
AMI 22847-AMI**

¹ (Call to national fixed network) | ² (Call to national mobile network)